

Version	Date
eSignal 10.3.1449	12/30/08

New Features

Trading from the Charts

On the Advanced Chart toolbar resides two new buttons... a Buy and a Sell button. These simply allow you to place orders directly from the charts. In the image on the right, the position is long 1 contract of the E-Mini S&P at 914.25. With a single click, one can place a stop or target level.

Any of these orders can be adjusted by a simple drag and drop. For instance, to move my stop to break even, one can simply grab it and drag it to the position line. Likewise, any pending order can be cancelled by clicking on the "X" and any position can be closed at the market price by clicking on the "X" on position line.

All the default order sizes, types and bracket styles can be customized within the trade management section of eSignal, which enables you to quickly place exactly the order you want, when you want and as fast as possible once the trade decision has been made.



Hibernation

Data hibernation is the ability for the eSignal application to put symbols to sleep that aren't being used. For example, if you had a Quote Window that had 120 symbols on it, but only 30 lines long, then you will only receive data for those 30 symbols. 90 of those symbols will be hibernated until the point in which they become visible on your screen. This can dramatically lower the amount of data being processed by eSignal and being downloaded from the eSignal servers.

The data hibernation algorithm implements many safeguards to ensure that your usage of eSignal is not impacted by this change. First, if any symbols exist in Advanced Charts, they are never hibernated. This is important because of the processing of EFS files may still need this data. Second, if any alerts are set, those symbols are never hibernated. Likewise, if global alerts are turned on then the user has the choice to either alert only on visible symbols or all symbols, the latter of which would disable hibernation.

Drag and Drop

The ability to simply move one column in a Quote Window to a new location is now possible. To do this, click and hold down your left mouse button on the column header you wish to move. Now move your mouse to a new location and then release your left mouse button, and the original column will move to that new location. In that same way, you can move symbols from one row on a Quote Window to another row or from one Quote Window to another Quote Window, however you will need to click on the outside portion of the cell to move the symbol.

Symbol	Last	Change	Pct	Vol
DOW JONES 30				
AA	9.04	-0.37	-3.93%	24.8M
AIG	1.35	-0.35	-20.59%	105M
AXP	23.08	-0.97	-4.03%	10.5M
BA	42.36	-2.88	-6.37%	9.23M

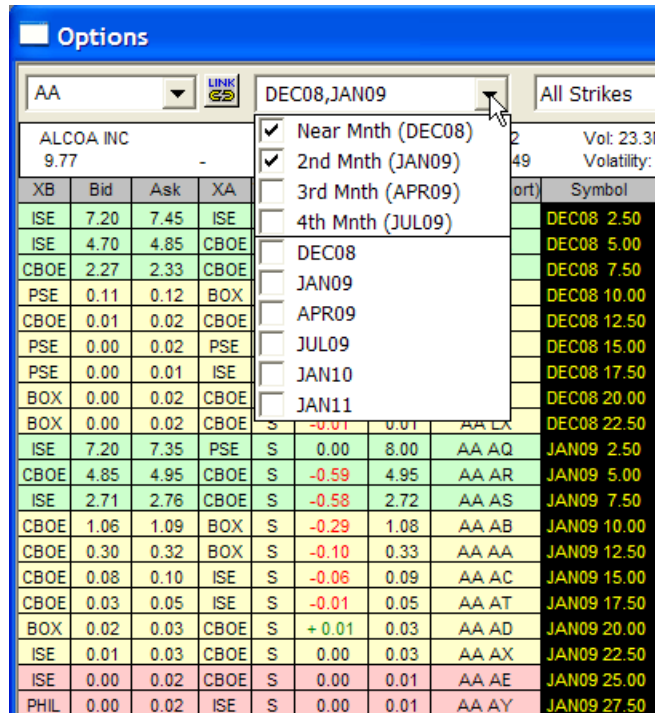
JPM	34.00	-1.43
KO	41.01	-0.60
MCD	51.76	-1.30
MMM	60.37	+0.76
MO	18.46	-0.76

One other aspect to drag and drop is that it is now possible to drag a symbol from a Quote Window into a chart in order to view that symbol's trading history. While this feature already exists via symbol linking, this additional method allows you to quickly assign a symbol to a chart that is not symbol linked.

Version	Date
eSignal 10.3.1449	12/30/08

Option Chain Enhancements

For options traders, we have a number of enhancements available in eSignal 10.3. First off, the month filter now allows for the selection of multiple months. If you trade right around expiration time, this is invaluable to see the next month's options and how they're stacking up against the near month. In addition, a new drop-down has been added to filter for the symbols that are in the month, out of the money or near the money.



A few other enhancements to this window include new option type and strike price columns, a new viewing style to include Calls and Puts on the same side of the window and Style Templates are now available. For futures options traders, this window has been made much more useful by the inclusion of selectable expiration months and the always useful snapshot mode, which puts the window into a special state that allows the symbols not to count against your overall symbol count.

Enhancements / Corrections

Numerous other enhancements and corrections have been included in this release. Nearly 100 in all!

For more information about these improvements, please refer to the readme.txt file in your eSignal directory.

